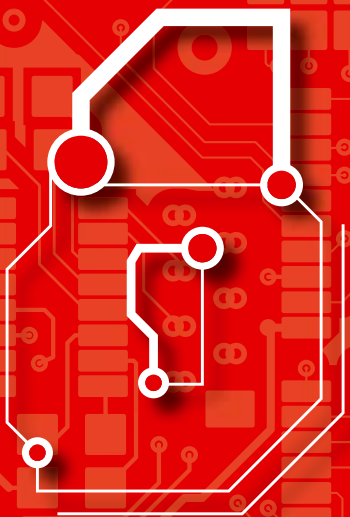


BETACONTROL



# Safe House





# The company Beta Control Ltd.

was established in 1994 as a company focusing on development of electronic control units.

The company acts in a few areas of Czech and European market:

- complete lift electronics deliveries and whole lift deliveries
- deliveries of electronics for Safe House system, including an installation
- electronics and control software for fuel stations deliveries
- control systems for vehicles deliveries
- bespoke development of internet server applications, control applications for Windows OS and Linux and development of wireless communication and GSM applications

During their long-time effect on the market, Beta Control acquired a unique experience with delivery, service and support of all of their supplied systems. Beta Control currently manage a team of specialists, who are able to solve the most complicated problems and flexibly react to customers' individual requirements.

Beta Control Ltd. strive for maximal satisfaction of all their customers, suppliers and co-workers by strictly abiding and constant improvement of quality control systems (ISO 9001, ISO 14001, OHSAS 18001).





# Safe House

The Safe House represents complex, top quality solution for security and protection of property and possessions in houses on all levels. Be it the lift renovation and security, protection of your personal belongings, the common areas security or ensuring an easy call for help.

## THE UNIQUE PROPERTY AND HEALTH PROTECTION

The open modular system of technology works on a principle of transmission of two-way data communication and an alarm messages from all used technological solutions via a communication channel. Alarm messages are sent to a dedicated mobile phone numbers, emergency service mobile phones or ARC.

The unique way of property and personal protection consists of possibility of non-stop online surveillance of each device. This ensures an immediate action in case of the alarm message or a malfunction. All devices are equipped with backup sources, so the alarm messages can still be transmitted even in case of a blackout.

## KK-WEBMON – THE SYSTEM'S HEARTH

The Kk-Webmon control unit is a hearth of system controlling all Safe House system's technology. It allows remote surveillance of all installed devices and the remote system monitoring and management. It also secures a GSM communication with individual elements of the Safe House system (alarm messages via SMS).

Safe House consists of these technologies:

- house access system
- VIP lift
- control panel for residential units, cellar booths or the lift engine room with motion sensors and door contacts
- fire detection system
- lifemonitor for emergency calls
- CCTV system

Additional components can be installed in the Safe House system:

- door portals including mail boxes, doorbell tables and intercom
- complete cellar booths
- lift platform lighting





# Access System

The BETAGATE access system is a reliable way to prevent an unauthorized person from entering your house. The conventional key is replaced with a chip card. Occupants of the house use it with a scanner located at the entry. The user profile is loaded and based on user authorization, the entrance is either enabled or disabled.



As a part of customer service, we offer

- user chip management – activation of new chips, blocking of lost chips, user authorization settings
- data export – output of entry evidence
- system monitoring and review
- technical support

- each chip card is unique – unlike conventional key, the chips can't be copied
- remote chip card management – quick and easy activation of new chip cards or blocking of existing ones, flexible authorization settings – the change is effective immediately
- optional access records – first and last entry can be traced etc.
- the access system can be connected to Beta Control lift – based on user authorization, the system can call the lift, with the house intercom the system can also call the lift for visitors
- all elements of the Safe House system can be controlled with one chip card
- user anonymity – only an authorized personnel has list of user names, the remote service operates only with number codes

We offer full reconstruction of an entry portal including doorbell panel and house intercom with each access system installation.

Door portals have plastic or aluminium finish with optional integration of mail boxes and doorbell panels.

The doors are equipped with electromechanical locks, fittings and self-closing system.

We develop solution for customer's specific needs based on dispositions of each house.



# VIP Lift

The VIP lift is an intelligent expansion of a regular lift. Thanks to electronic chip control, the VIP lift is available only to an authorized user and is protected from vandals. The lift operation is monitored and recorded, the database output can be used for running cost account or in case of damage or malfunction.

As part of the customer service, we also offer

- user chip management – activation of new chips, blocking of lost chips, user authorization settings
- data export – output of lift operation evidence
- service package including additional service (24 hour lift monitoring, non-stop service for rescuing people from the lift, professional inspections, etc.)

- the basic version, VIP BASIC contains chips scanner in cabin panel – user can enter the cabin without the chip card, but the lift can't be operated
- the extended version VIP FULL has chip scanner in cabin as well as on summoning panel – the user can't enter a lift without the chip card. This version offers extended protection against vandals.
- in connection with the access system, the lift can be called automatically based on user authorization. In case of more than one lift in a building, the system calls the nearest one or the pre-set one.
- the user authorization allows to set:
  - who is authorized to operate the lift
  - which station can be accessed
  - a time-frame for lift operation
  - a time-frame for VIP operation mode – suitable mostly for public buildings such as hospitals or offices. During the day, the lift operates in normal mode, at night or outside the Office Hours, the chip is required to operate the lift
- the lift is operated with the same chip card as the rest of the Safe House system



# CCTV

BETA EYE CCTV system allows area surveillance and real-time image transmission to a computer monitor in surveillance centre or on TVs in individual apartments. Thanks to CCTV system, the building entrance, the common areas, the lift cabin and the building surroundings can all be monitored to prevent vandalism and burglaries.



As part of the customer service, we also offer

- maintenance and update of CCTV system
- scanning, maintenance of recording equipment
- maintenance of equipment

- the CCTV image can be transmitted to a computer in surveillance centre, which can be located directly in the protected property as well as outside the property
- CCTVs can be connected to TV antenna and image can be transmitted to TV sets in individual apartments
- the CCTV image can be shown on dedicated channels (camera 1 = channel 1) or joined into single image on one channel
- the CCTV image can be transmitted via the Internet
- we supply the CCTV system in the version with or without the recording
- records can be stored on Hard Disk Drive (HDD), memory card (SD), or a flash disc



# Fire Detection System

BETAFIRE fire detection system detects fire shortly after it breaks out. The smoke sensors react if smoke is detected in guarded area. For maximal protection against fire related damages, we suggest installing the smoke sensors in each apartment as well as in common areas of the house. This way you can immediately react to a fire hazard and minimize damages to health and property.



As part of the customer service, we also offer

- sensor operation check
- battery check
- alarm check

- we supply both wired and wireless smoke sensors for common areas of apartment houses (BETAFIRE V1)
- we supply wireless smoke sensors for individual apartments (BETAFIRE V2)
- sensor is powered with a 9V battery typically lasting one year
- in the event of an alarm, the sensor beeps and the system sends SMS to three defined phone numbers and / or notify the ARC. They then proceed according to the instructions provided by the customer - either verify the situation or notify emergency corps.
- system can recognize which sensor sends an alarm (sensor are named according to location), it is easy to find the location of the event



# Apartment and commercial space security

Security central BETASEC is an effective protection against an unauthorized trespassing of premises of the individual apartments, cellar booths, the lift machine room or any other areas of the house. In case the door contact sensor or the motion sensor registers an unauthorized activity in a protected area, the security system sound the alarm and sends a message of a burglary attempt to ARC or pre-set phone number.

As part of the customer service, we also offer

- the emergency phone numbers setup and/or ARC connection
- sensors check
- battery check
- alarm check

- the security system is controlled by the same chip card as the rest of elements of the Safe House system (access system, VIP lift)
- security central is activated and deactivated by an electronic chip – there is no need for user to remember any passwords or complicated procedures
- apart from the door contact, the wireless motion sensors, wired and wireless smoke sensors and the lifemonitor can also be connected to the security central
- the lift communication module is used to deliver alarm messages in buildings with the Beta Control lift (central type BETASEC GSM)
- in building without the Beta Control lift, the security central is equipped with its own GSM/GPRS communication module

In case you decide to install the security central in whole building or the smoke detectors in the common areas of the house, we also recommend revitalization of common corridors on each floor. The corridors are then equipped with wall or ceiling lighting fixtures with motion sensors, which switch the lights on automatically in case of movement in given area. The lights are switched on and off gradually, the whole house is not lit at the same time. This cuts costs and safes the environment. The fixtures are fitted with halogen lamps or CFL designed for use in combination with motion sensors.





# Steel Cellar Booths

The Beta Control cellar booth represents a space for safe storage of belongings in areas of house with a minimal appearance of people. The structure of newly built booths from durable steel is filled with a trapezoidal sheet with a possibility of perforation for a ventilation. Each booth is equipped with a security headquarters for maximal burglary protection.

As part of the customer service, we also offer

- the emergency phone numbers setup and/or ARC connection
- sensors check
- battery check
- alarm check

- durable steel construction
- walls from trapezoidal sheet with a galvanized finish
- sheet perforation possibility for cellar booth ventilation
- each booth is equipped with light and socket with electricity meter
- access system controls entries into the booth and in case of trespass sounds an alarm and sends a SMS to user´s pre-set phone number – each booth can be paired with an unique phone number – the message is sent directly to booth owner
- information of current state (blocked, unblocked, alarm) provides LED signalization
- colour finish based on customers wish
- booth assembly time is one day
- optional bike racks and ski racks can be installed
- the booth is controlled with the same electronic chip as the rest of elements of the Safe House system (access system, VIP lift)



# Lifemonitor

Lifemonitor BETALIFE is a device designed for people with a higher risk of sudden occurrence of health issues, elderly people or people living alone. A close person can be notified of the situation, thus securing assistance by mere touch of a button.



As part of the customer service, we also offer

- operation check
- alarm check

- lifemonitor minimizes security and health risks for elderly, handicapped or alone living people. It is supplied in the form of a necklace or a bracelet – user can always wear it
- pushing the button sends an alarm message to up to three pre-defined phone numbers or ARC or defined operating phone number
- it is supplied in the form of a necklace or bracelet – user can always wear it
- lifemonitor is light and space-saving – it does not limit the user in everyday life
- the emergency button is big enough compared to mobile phone buttons – it can be pushed in emergency situations
- high toughness
- water resistance
- easy installation
- instruction manual



# References

Thanks to its complexity in the field of an apartment house protection, the Safe House system has become part of Home Office´s „Secure Locality – Secure Living“ project. This project aims to change the citizens´ attitude towards security issues, their motivation towards secure behaviour, apartment and house protection, neighbour relationship improvement with a respect to house rules. The project aims to lower anonymity of occupants of apartment houses, prevent unauthorized persons from entering the houses and lower risk of vandalism and criminal activity with a package of devices installed in high-risk buildings.

## **Brno, Koniklecová 5**

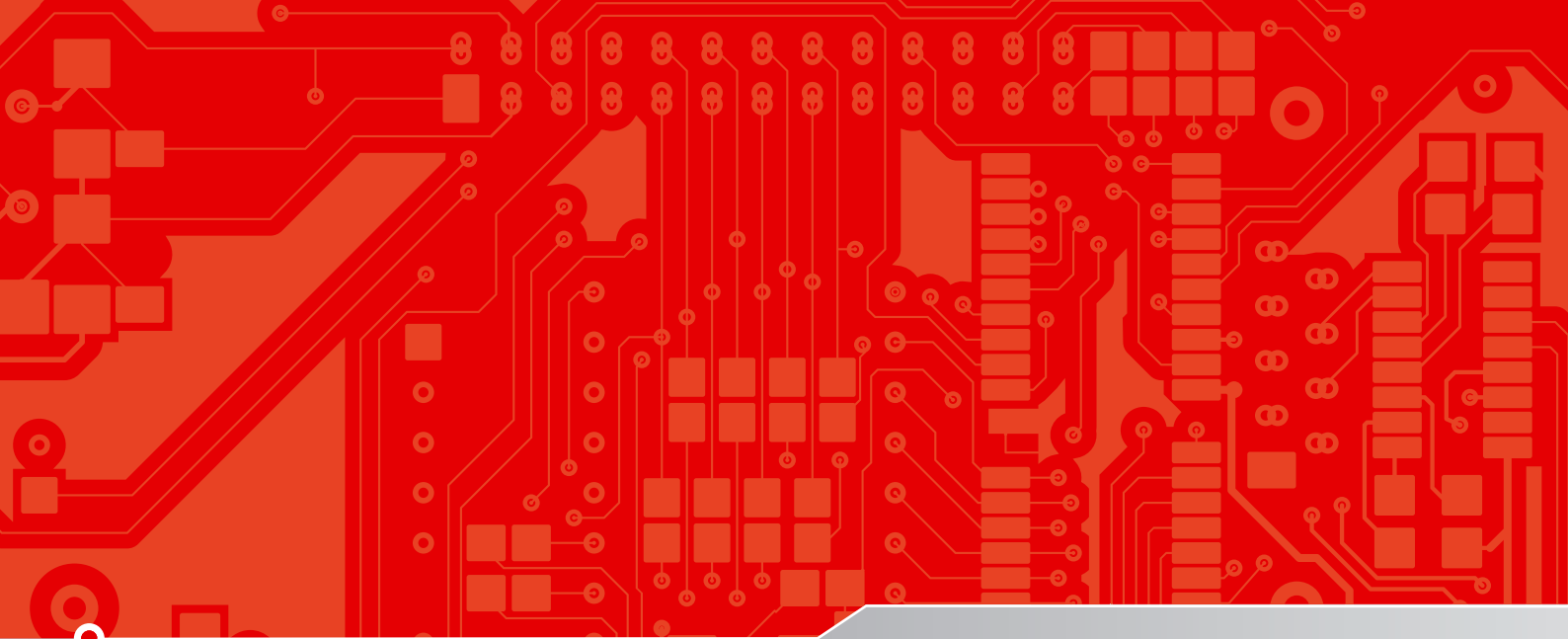
- Property characteristic: 13 floors | 156 apartments | 1/3 accommodation for mothers with children, 2/3 city rental apartments with often socially weak or problematic tenants | high occupants fluctuation | mostly processed situations: theft, vandalism, noise curfew
- Measures taken: Lifts: capacity 400 kg and 1000 kg (formerly 2 x 350 kg), automatic doors with fire resistance EW60, vandal-proof version, lift CCTV system, VIP lift system (operation regulation based on user authorization), one lift serving as evacuation elevator | 31 smoke sensors | 24 CCTVs | 18 doors secured with access system

## **Břeclav, Riegrova, Krátká, Na Zahradách**

- Property characteristic: five block house | 81 apartments | each house has two entrances | lower income groups or unemployed occupants | mostly processed situations: disturbance of peace, noise curfew, vandalism
- Measures taken: 31 CCTVs | monitoring centre with CCTV image feed | access system with dallas electronic chip cards | 9 entry portals with a safety glass and self locking locks | doorbell panels in vandal-proof finish with new house intercoms

The system was awarded prestigious Urban Security Award 2011





Beta Control s.r.o.  
Černého 829/58  
635 00 Brno  
Czech Republic  
obchod@betacontrol.cz  
tel: +420 515 511 201

[www.betacontrol.cz](http://www.betacontrol.cz) | [www.bezpecny-dum.cz](http://www.bezpecny-dum.cz)